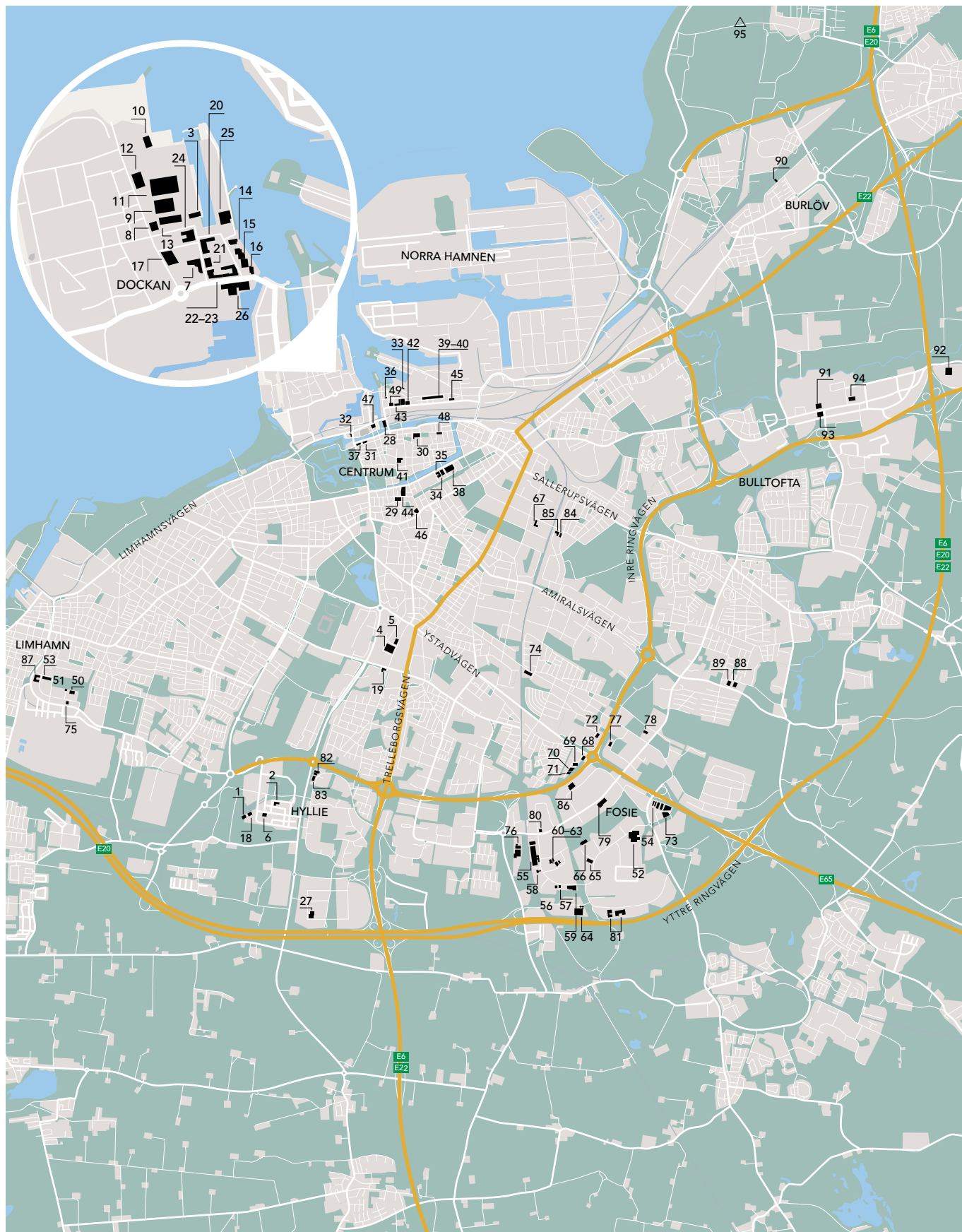


Property lists

Malmö

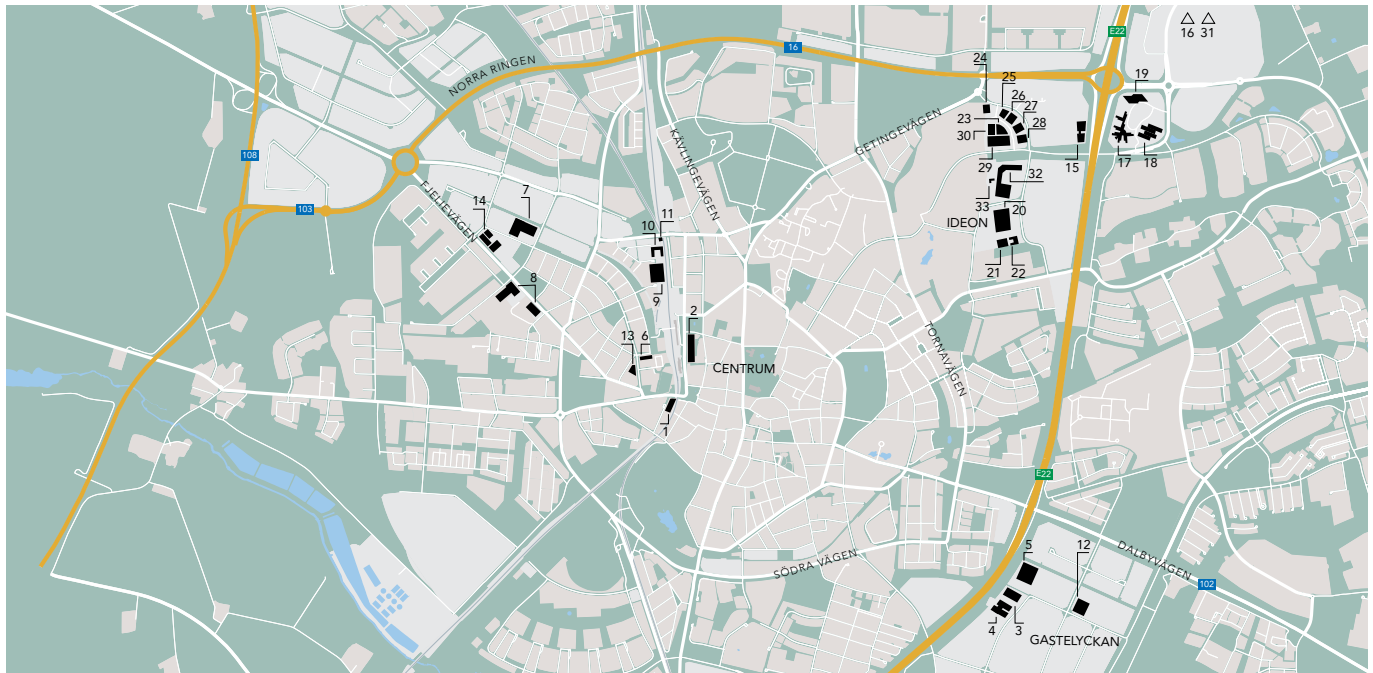


Malmö, Dockan and Hyllie												
No.	Name of property	Address	Municipality	Type of property	Tax ass. val. SEK m	Lease-hold	Offices, m ²	Retail, m ²	Logistics/Prod, m ²	Education/Healthcare, m ²	Other, m ²	Total, m ²
1	Bläckhornet 1	Pulpetgatan	Malmö	Projects & Land	74							0
● 2	Bure 2	Bures g. 7-11, Friggs gränd 2	Malmö	Office/Retail	237		7,276		12			7,288
3	Dockporten 1	Dockgatan 1 A-F	Malmö	Office/Retail	122		4,120	450				4,570
● 4	Forskaren 1	PA Hanssons väg 35	Malmö	Office/Retail	282		14,910	225	1,694		593	17,422
5	Forskaren 4	PA Hanssons väg 35	Malmö	Office/Retail	0		2,730					2,730
● 6	Gimle 1	Hyllie Allé 36-40/Nannas g 1-7	Malmö	Office/Retail	293		8,502	159	504			9,165
● 7	Gångtappen 2	Hallenborgs gata 4-12	Malmö	Office/Retail	273		9,165	680	19			9,864
8	Hordaland 1	Östra Varvsgatan 7 B	Malmö	Office/Retail	47			157				157
9	Kranen 2	Östra Varvsgatan 11 A-F	Malmö	Office/Retail	0			0	685	18,687		19,372
10	Kranen 4	Östra Varvsgatan 23	Malmö	Office/Retail	49		1,144		64	3,177		4,385
11	Kranen 6	Östra Varvsgatan 13 A-D	Malmö	Office/Retail	0				5,399	2,830	3,050	11,279
12	Kranen 7	Östra Varvsgatan 15	Malmö	Projects & Land	1		650		3,449			4,099
● 13	Kranen 8	Ö Varvsgatan 9 A-B/Dockg 2	Malmö	Office/Retail	323		15,070	375	41			15,486
● 14	Kranen 9	Isbergs gata 15	Malmö	Office/Retail	168		6,000	177				6,177
15	Kranen 14	Isbergs gata 3-13	Malmö	Office/Retail	147		7,650	562				8,212
16	Kranen 15	Stora Varvsgatan 1	Malmö	Office/Retail			569			702		1,271
17	Naboland 3	Östra Varvsgatan, Läkatan	Malmö	Projects & Land	17							
18	Pulpeten 5	Skrivaregatan	Malmö	Projects & Land	160							0
19	Ritaren 1	Stadiongatan 10	Malmö	Office/Retail	21	L	2,713					2,713
● 20	Skrovet 3	Dockplatsen 10-18	Malmö	Office/Retail	246		7,526	1,599	144	1,115		10,384
21	Skrovet 4	Hallenborgs gata 7 A-B	Malmö	Office/Retail	64							0
● 22	Skrovet 5	Hallenborgs gata 1A-5	Malmö	Office/Retail	216		7,430	1,242				8,672
23	Skrovet 6	Stora Varvsgatan 3-7	Malmö	Office/Retail	316		12,147	284				12,431
● 24	Skåneland 1	L Varvsg 53	Malmö	Office/Retail	217		11,206	325				11,531
25	Torrdockan 6	Dockplatsen 1	Malmö	Office/Retail	245		10,613	451			1	11,065
● 26	Ubåten 2	Stora Varvsgatan 2-6 A-B	Malmö	Office/Retail	188		12,172	369				12,541
27	Urnes 3	Långhusgatan 4	Malmö	Office/Retail	39		4,600					4,600
Malmö, Dockan and Hyllie total					3,745		146,193	7,055	12,011	26,511	3,644	195,413

Malmö City												
No.	Name of property	Address	Municipality	Type of property	Tax ass. val. SEK m	Lease-hold	Offices, m ²	Retail, m ²	Industrial/warehousing, m ²	Education/Healthcare, m ²	Other, m ²	Total, m ²
28	Börshuset 1	Skeppsbron 2	Malmö	Projects & Land	123		4,357	934	36			5,327
29	Elefanten 40	Storgatan 20/S Förstadsg 12-14	Malmö	Office/Retail	338		10,578	2,742	8			13,328
30	Erik Menved 37	M Nilsg 2-24/Kattsundsg 7-27	Malmö	Office/Retail	407		16,059	3,952	2,603		203	22,817
31	Fisken 18	N Vallg 100-102/Västerg 35	Malmö	Office/Retail	148		5,193		119	1,508		6,820
32	Flundran 1	Gibraltargatan 2	Malmö	Office/Retail	0					2,451		2,451
33	Hamnen 22:188	Hans Michelsensgatan 8-10	Malmö	Office/Retail	169		6,587	700	1,151			8,438
34	Karin 13	Fänriksgratan 2/Drottningg. 18	Malmö	Office/Retail	90		6,171		749		181	7,101
35	Karin 14	Kungsgatan 13	Malmö	Office/Retail	99		7,219		1,199			8,418
36	Kolga 4	Jörgen Kocksgatan 4	Malmö	Office/Retail	62		2,244		42			2,286
37	Neptun 6	Västergatan 43-47/Slottsg. 2	Malmö	Office/Retail	89		3,190		290	1,486		4,966
● 38	Nora 11	Kungsgatan/Drottningg.	Malmö	Office/Retail	409		27,186		1,471			28,657
39	Polstjärnan 1	Jupiterg 4/Jörgen Kocksg 35	Malmö	Projects & Land	16							0
40	Polstjärnan 2	Jupiterg 4/Jörgen Kocksg 35	Malmö	Projects & Land	2				11,055			11,055
41	Sankt Jörgen 21	Söderg 22-24/Baltzarg 26-34	Malmö	Office/Retail	365		7,816	3,457	61			11,334
● 42	Sirius 3	Carlsg 14A-F/Navigationsg.	Malmö	Office/Retail	262		6,828	325	30			7,183
43	Slagthuset 1	Carlsg 10, 12/Utställng 1B	Malmö	Office/Retail	566		6,878	8,000	43	1,267	10,275	26,463
44	Sparven 15	V Kanal 2-8/Storg 15	Malmö	Office/Retail	89		8,118		6,026	6,419		20,563
45	Söderhavet 4	Carlsgatan 54/Elbegatan	Malmö	Office/Retail	15			2,832				2,832
● 46	Uven 9	Diskontogången 2	Malmö	Office/Retail	97		7,590					7,590
● 47	Väktaren 3	Hjälmareg 3/Nordenskiöldsg 2B	Malmö	Office/Retail	212		8,276		30			8,306
48	Österport 7	Drottningtorget 14	Malmö	Office/Retail	161		10,925					10,925
● 49	Östersjön 1	Carlsgatan 6-8/Stormgatan 5	Malmö	Office/Retail	259		7,935		80			8,015
Malmö City total					3,977		153,150	22,942	24,993	13,131	10,659	224,875

Outer Malmö												
No.	Name of property	Address	Municipality	Type of property	Tax ass. val. SEK m	Leasehold	Offices, m ²	Retail, m ²	Logistics/Prod, m ²	Education/Healthcare, m ²	Other, m ²	Total, m ²
50	Balken 10	Ringugnsgratan 3	Malmö	Logistics/Prod	22				3,725			3,725
51	Balken 7	Schaktugnsgratan 5	Malmö	Logistics/Prod	8		618		1,202			1,820
52	Benkammen 16	Kantyxegatan 14	Malmö	Logistics/Prod	38				5,870			5,870
53	Blocket 1	Limhammsgårdens Allé 3–37	Malmö	Logistics/Prod	39		3,363		2,768		721	6,852
54	Boplatsen 3	Boplatsgratan 4–8	Malmö	Office/Retail	147		20,732	660	2,859		228	24,479
55	Bronsdolken 3	Stenyxegatan 13–15	Malmö	Logistics/Prod	58			4,242	7,332			11,574
56	Bronsdolken 10	Stenyxegatan 27	Malmö	Logistics/Prod	6				1,271			1,271
57	Bronsdolken 11	Stenyxegatan 29	Malmö	Logistics/Prod	6		432		521			953
58	Bronsdolken 18	Stenyxegatan 17	Malmö	Office/Retail	9				1,311			1,311
59	Bronsdolken 25	Stenyxegatan 33–35	Malmö	Logistics/Prod	42		480	6,872	2,881			10,233
60	Bronsspannen 5	Trehögsgratan 7	Malmö	Logistics/Prod	3				735			735
61	Bronsspannen 8	Flintyxegatan 3	Malmö	Logistics/Prod	6				1,067			1,067
62	Bronsspannen 9	Flintyxegatan 5	Malmö	Logistics/Prod	10				2,069			2,069
63	Bronsspannen 13	Trehögsgratan 3	Malmö	Logistics/Prod	8				1,765			1,765
64	Bronsåldern 2	Bronsåldersgratan 2	Malmö	Logistics/Prod	64				12,485			12,485
65	Dubbelknappen 15	Kantyxegatan 23	Malmö	Office/Retail	12		1,541		78			1,619
66	Dubbelknappen 23	Risyxegatan 3	Malmö	Logistics/Prod	38				5,179			5,179
67	Grytan 3	Industrigratan 21	Malmö	Logistics/Prod	12		1,263		1,100			2,363
68	Hindbygården 7	Ö Hindbyvägen 70	Malmö	Projects & Land	10		1,844					1,844
69	Hindbygården 8	Ö Hindbyvägen 74	Malmö	Office/Retail	13		1,630					1,630
70	Hindbygården 9	Ö Hindbyvägen	Malmö	Projects & Land	2							0
71	Hindbygården 10	Ö Hindbyvägen	Malmö	Projects & Land	1							0
72	Hundlokan 10	Cypressvägen 21–23	Malmö	Logistics/Prod	41				5,985			5,985
73	Hällristningen 5	Boplatsgratan 5	Malmö	Projects & Land	4							0
74	Mandelblomman 5	Lönngatan 75	Malmö	Logistics/Prod	7		640		1,992			2,632
75	Muren 5	Ringugnsgratan 8	Malmö	Logistics/Prod	7				1,593			1,593
76	Olgård 8	Olgårdsgatan 3	Malmö	Logistics/Prod	64				8,189			8,189
77	Revolversvarven 11	Jägerhillsgatan 20	Malmö	Office/Retail	10	L		1,650				1,650
78	Rosengård 130:403	Agnesfridsvägen 113 A	Malmö	Office/Retail	63		7,520	559	196			8,275
79	Spännbucklan 9	Agnesfridsvägen 182	Malmö	Logistics/Prod	39				6,800			6,800
80	Stenyxan 20	Stenyxegatan 16	Malmö	Office/Retail	9		1,415		175			1,590
81	Stenåldern 7	Stenåldersgratan	Malmö	Logistics/Prod	110				13,976			13,976
82	Sufflören 3	Axel Danielssons väg 259	Malmö	Logistics/Prod	3		828		1,470			2,298
83	Sufflören 4	Axel Danielssons väg 261	Malmö	Office/Retail	25		4,098				1,043	5,141
84	Syret 12	Industrigratan 33 B	Malmö	Logistics/Prod	10	L			1,803			1,803
85	Syret 13	Industrigratan 31–33	Malmö	Logistics/Prod	9		788		778			1,566
86	Trindyxan 3	Bronsyxegatan 9	Malmö	Logistics/Prod	38		576		7,064			7,640
87	Valvet 1	Krossverksgatan 5 A–M	Malmö	Logistics/Prod	21		2,818		645			3,463
88	Vårbuketten 2	Husievägen 19	Malmö	Logistics/Prod	15				2,837			2,837
89	Vårbuketten 4	Husievägen 17	Malmö	Projects & Land	7							0
90	Arlöv 19:133	Hantverkaregatan 18	Burlöv	Office/Retail	16		1,662					1,662
91	Sunnanå 12:26	Staffanstorpsvägen 103	Burlöv	Projects & Land	1							0
92	Sunnanå 12:27	Mor Marnas Väg 6–10	Burlöv	Logistics/Prod	72				14,525			14,525
93	Sunnanå 12:53	Vattenverksv./Toftanäsv. 232	Burlöv	Logistics/Prod	21				2,332			2,332
94	Sunnanå 12:54	Staffanstorpsvägen 104	Burlöv	Logistics/Prod	53				5,972			5,972
95	Borgeby 15:14, etc.	Norra Väst kustvägen	Lomma	Projects & Land	0							0
Outer Malmö, total					1,198		52,248	13,983	130,550	0	1,992	198,773
Malmö, total					8,921		351,591	43,980	167,554	39,642	16,295	619,061

Lund



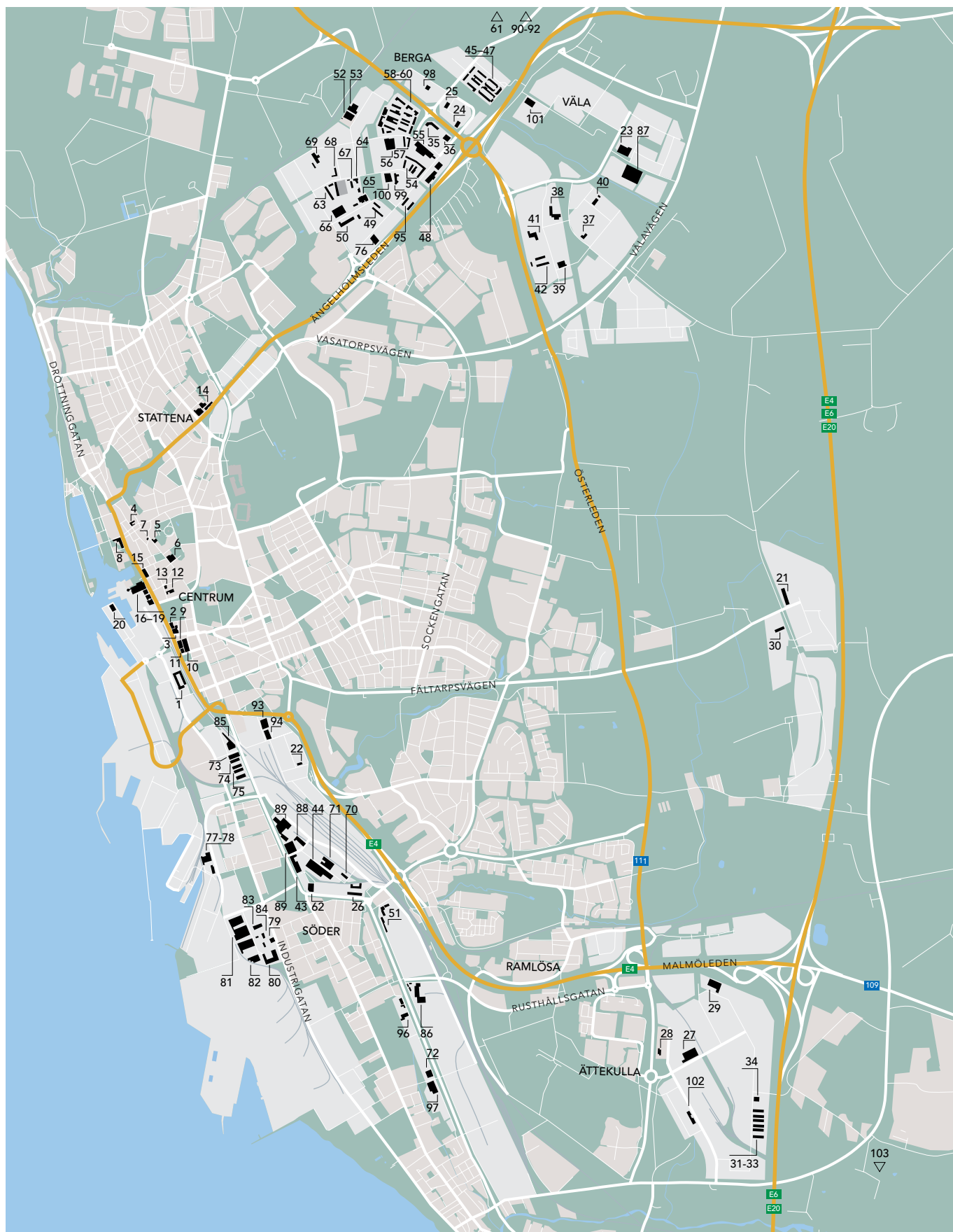
Central Lund/Gastelyckan

No.	Name of property	Address	Municipality	Type of property	Tax ass. val. SEK m	Leasehold	Offices, m ²	Retail, m ²	Logistics/Prod, m ²	Education/healthcare, m ²	Other, m ²	Total, m ²
1	Armaturen 4	Trollebergsv 1/Gasverksg 1–9	Lund	Office/Retail	78		6,650		175		208	7,033
2	Bytarebacken 39	Bang. 10–12/Clemenstorget 5	Lund	Office/Retail	297		4,421	6,920	1,057	3,078	167	15,643
● 3	Diabasen 1	Skiffervägen 26 A–B	Lund	Logistics/Prod	36		661		5,217			5,878
4	Diabasen 3	Skiffervägen 30–86	Lund	Logistics/Prod	42		2,250		5,870			8,120
5	Flintan 3	Skiffervägen 24	Lund	Logistics/Prod	27				5,979			5,979
● 6	Landstinget 2	Byggmästaregatan 4	Lund	Office/Retail	67		3,215				4	3,219
7	Länsmannen 1	Åldermansg. 2/Måsvägen 23,	Lund	Logistics/Prod	32		220		7,740			7,960
● 8	Måsen 17	Starvägen 19/Grisslev. 15–19	Lund	Office/Retail	54		3,828		452			4,280
● 9	Posthornet 1	Bruksgratan 8/Vävareg. 21–23	Lund	Office/Retail	355		10,588	197	103			10,888
10	Raffinaderiet 3	Fabriksgatan 2 A–F	Lund	Projects & Land	77							0
● 11	Raffinaderiet 5	Kung Oskars Väg 11 A–D	Lund	Office/Retail	49		1,865		42			1,907
12	Skiffern 2	Skiffervägen 14/Porfyrvägen 7	Lund	Logistics/Prod	11				2,910			2,910
● 13	Spettet 11	Byggmästaregatan 5	Lund	Office/Retail	28		1,486		41			1,527
14	Töebacken 7	Bondev 2/Fjeliev 68	Lund	Office/Retail	51		2,845	1,482	448			4,775
Central Lund/Gastelyckan, total					1,203		38,029	8,599	30,034	3,078	379	80,119

Lund Ideon

No.	Name of property	Address	Municipality	Type of property	Tax ass. val. SEK m	Leasehold	Offices, m ²	Retail, m ²	Logistics/Prod, m ²	Education/healthcare, m ²	Other, m ²	Total, m ²
● 15	Forskaren 3	Scheelevägen 24–26	Lund	Office/Retail	252		11,253					11,253
16	Kunskapen 1	Partikelgatan	Lund	Projects & Land	7							0
● 17	Nya Vattentornet 2	Mobilvägen 10/Ideogatan 51	Lund	Office/Retail	404		21,540	209	1,243		355	23,348
● 18	Nya Vattentornet 3	Mobilvägen 1	Lund	Office/Retail	499		18,533	1,231	1,118			20,882
● 19	Nya Vattentornet 4	Mobilvägen 4–6	Lund	Office/Retail	570		20,624	1,477	1,651		200	23,952
20	Studentkåren 2 (Alfa)	Scheelevägen 15	Lund	Office/Retail	72		9,315	1,183	280		22	10,800
21	Studentkåren 5	Scheelevägen 15 B–D	Lund	Office/Retail	0		8,150					8,150
● 22	Studentkåren 6	Scheelevägen 15 A	Lund	Office/Retail	35		4,510		21			4,531
23	Syret 1 (Delta P-hus)	Molekylvägen 3	Lund	Office/Retail	17							0
● 24	Syret 3 (Gateway)	Scheelevägen 27	Lund	Office/Retail	422		9,097		257		8,217	17,571
25	Syret 4 (Delta 2)	Scheelevägen 25	Lund	Projects & Land	2							0
26	Syret 5 (Delta 3)	Scheelevägen 23	Lund	Office/Retail	39		7,050					7,050
● 27	Syret 6 (Delta 4)	Scheelevägen 21	Lund	Office/Retail	48		8,050		406			8,456
28	Syret 7 (Delta 5)	Scheelevägen 19	Lund	Office/Retail	42		6,078		205			6,283
29	Syret 8 (Gamma)	Ideogatan 1A–D	Lund	Office/Retail	44		10,091		87			10,178
30	Syret 9 (Delta 6)	Ideogatan 3A–B	Lund	Office/Retail	21		3,322		41			3,363
31	Vetskapen 1	Partikelgatan	Lund	Projects & Land	7							0
32	Vätet 1 (Beta 1–6)	Scheelevägen 17	Lund	Office/Retail	159		21,799	710	1,157	1,016	5	24,687
33	Vätet 3 (Minideon)	Ole Römers väg 5	Lund	Office/Retail	0					335		335
Lund Ideon, total					2,639		159,413	4,810	6,466	1,351	8,799	180,839
Lund, total					3,843		197,442	13,409	36,500	4,429	9,178	260,958

Helsingborg



Central Helsingborg												
No.	Name of property	Address	Municipality	Type of property	Tax ass. val. SEK m	Lease- hold	Offices, m ²	Retail, m ²	Logistics/ Prod, m ²	Education/ healthcare, m ²	Other, m ²	Total, m ²
1	Hermes 10	Rönnowsg 4–12, Bredg 7–11	Helsingborg	Office/Retail	375		29,100	886	1,500	19,190	579	51,255
2	Kalifornien 10	Järnvägsgatan 35–37	Helsingborg	Office/Retail	86		5,831				77	5,908
3	Kalifornien 11	Gasverksq 9 Järnvägsg 39&41	Helsingborg	Office/Retail	88		3,092		29	1,334	2,010	6,465
4	Kullen Västra 19	Kullagatan 30	Helsingborg	Office/Retail	33		1,108	402			372	1,882
5	Kärnan Norra 21	Stortorget 17/Norra Storg 6	Helsingborg	Office/Retail	39		2,309	303	159			2,771
6	Kärnan Södra 9	Södra Storg 9	Helsingborg	Office/Retail	0		184	884	46	2,830	2,641	6,585
7	Magnus Stenbock 7	Strömgränd 3/N Storgatan 7	Helsingborg	Office/Retail	9		393	200				593
8	Najaden 14	Drottningg. 7, 11/Sundstor. 2–6	Helsingborg	Office/Retail	194		8,635	1,552	602	2,775	45	13,609
9	Polisen 5	Konsul Perssons plats 1	Helsingborg	Office/Retail	218		8,987					8,987
10	Polisen 6	Carl Krooksgatan 24	Helsingborg	Office/Retail	162		6,896		132	1,479		8,507
11	Polisen 7	Nedre Holländaregatan 1	Helsingborg	Projects & Land	20							0
12	Ruuth 23	Bruksgränd 29	Helsingborg	Office/Retail	0		1,145	313		2,740		4,198
13	Ruuth 35	Bruksgränd 25/Prästgatan 10	Helsingborg	Office/Retail	0			589	136	1,730		2,455
14	Stattena 7	StattenaCent. NellyKrooksg.2	Helsingborg	Office/Retail	65		1,858	4,838		124	2,766	9,586
15	Svea 7	Järnvägsg. 7–11/S.Strandg. 2–6	Helsingborg	Office/Retail	127		5,000	2,013	62		313	7,388
16	Terminalen 1	Järnvägsg. 10/Kungstorg. 8	Helsingborg	Office/Retail	630	L	16,643	6,951	354	1,088	1,211	26,247
17	Terminalen 3	Järnvägsgatan 14	Helsingborg	Office/Retail	80	L	2,951	135		1,076		4,162
18	Terminalen 4	Järnvägsgatan 18	Helsingborg	Office/Retail	68	L	3,348				5	3,353
19	Terminalen 5	Järnvägsgatan 22–24	Helsingborg	Office/Retail	105	L	5,591	142				5,733
20	Ursula 1	Redareg. 48–50/Henckels trg 3	Helsingborg	Office/Retail	317		10,969		0		46	11,015
Central Helsingborg, total					2,617		114,040	19,208	3,020	34,366	10,065	180,699
Outer Helsingborg												
No.	Name of property	Address	Municipality	Type of property	Tax ass. val. SEK m	Lease- hold	Offices, m ²	Retail, m ²	Logistics/ Prod, m ²	Education/ healthcare, m ²	Other, m ²	Total, m ²
21	Akkumulatör 17	Knut Påls väg 1	Helsingborg	Logistics/Prod	25				4,214			4,214
22	Afrika 18	Verkstadsg. 13/Rågångsg. 7	Helsingborg	Office/Retail	11		1,434					1,434
23	Ametisten 5	Porfyrgatan 1	Helsingborg	Logistics/Prod	42		619		7,050			7,669
24	Armborstet 4	Lilla Garnisonsgatan 31	Helsingborg	Logistics/Prod	12		899	1,970				2,869
25	Armborstet 6	Lilla Garnisonsgatan 41	Helsingborg	Logistics/Prod	13		421	3,798				4,219
26	Brottaren 15	Kapplöpningsgatan 14, 16	Helsingborg	Logistics/Prod	22		3,255	100	1,014			4,369
27	Bunkagården V. 8	Bunkalundsvägen 5	Helsingborg	Logistics/Prod	14		30		10,653			10,683
28	Bunkagården 6	Torbornavägen 6	Helsingborg	Logistics/Prod	5				556			556
29	Bunkalund Östra 8	Bunkagårdsgatan 13	Helsingborg	Logistics/Prod	20				6,300			6,300
31	Cylindern 2	Fältarpvägen 396	Helsingborg	Logistics/Prod	15				2,173			2,173
31	Flintyxan 1	Stenbrovägen 40–42	Helsingborg	Logistics/Prod	11				3,107			3,107
32	Flintyxan 3	Stenbrovägen 36–38	Helsingborg	Logistics/Prod	11				3,138			3,138
33	Flintyxan 5	Stenbrovägen 32–34	Helsingborg	Logistics/Prod	18		324		4,720			5,044
34	Flintyxan 6	Stenbrovägen 30	Helsingborg	Projects & Land	2							0
35	Floretten 3	Garnisonsgatan 25 A–C	Helsingborg	Office/Retail	56		5,392	44	484			5,920
36	Floretten 4	Garnisonsgatan 23	Helsingborg	Office/Retail	92		4,647	138				4,785
37	Grusbacken 1	Mogatan 12	Helsingborg	Logistics/Prod	12				1,278			1,278
38	Grusgropen 3	Grustagsgatan 22	Helsingborg	Logistics/Prod	30		1,067		4,776			5,843
39	Grushögen 2	Makadamgatan 1	Helsingborg	Logistics/Prod	12				3,150			3,150
40	Grusplanen 2	Blockgatan 8	Helsingborg	Logistics/Prod	13		405		2,756			3,161
41	Grustaget 1	Grustagsgatan 35–37	Helsingborg	Office/Retail	17		4,008					4,008
42	Grustaget 2	Grustagsgatan 11–15	Helsingborg	Logistics/Prod	21		1,316		2,376			3,692
43	Gymnasten 4	Planteringsvägen 11	Helsingborg	Office/Retail	35		65	3,048	2,787		60	5,960
44	Gymnasten 9	Kapplöpningsgatan 6	Helsingborg	Logistics/Prod	42		2,248		15,703			17,951
45	Hakebössan 1	Karbingatan 28–32	Helsingborg	Logistics/Prod	22		997		3,888			4,885
46	Hakebössan 2	Karbingatan 10–20	Helsingborg	Logistics/Prod	42		823	366	8,185			9,374
47	Hakebössan 3	Karbingatan 22	Helsingborg	Logistics/Prod	24		1,123		4,201			5,324
48	Hillebarden 1	Garnisonsgatan 16	Helsingborg	Logistics/Prod	38		2,014	2,732	4,285			9,031
49	Huggjärnet 12	Garnisonsgatan 7a	Helsingborg	Office/Retail	44		4,622		860			5,482
50	Huggjärnet 13	Kastellgatan 2	Helsingborg	Logistics/Prod	10			600	130			730
51	Hästhagen 7	La Cours gata 2–6	Helsingborg	Office/Retail	47		7,418	1,289	1,062	1,297	320	11,386
52	Kniven 2	Mörsaregatan 17	Helsingborg	Logistics/Prod	21				3,515			3,515
53	Kniven 3	Mörsaregatan 19	Helsingborg	Logistics/Prod	18		200		4,591			4,791
54	Kroksabeln 11	Muskötg.17–27/Garnisonsg 17	Helsingborg	Logistics/Prod	30		488	1,202	6,277			7,967
55	Kroksabeln 12	Garnisonsgatan 19	Helsingborg	Logistics/Prod	77		2,810	3,982	8,260			15,052
56	Kroksabeln 19	Florettgatan 14	Helsingborg	Logistics/Prod	24		931	720	6,543			8,194
57	Kroksabeln 20	Florettgatan 16	Helsingborg	Office/Retail	29		972	2,463	842			4,277
58	Lansen 1	Florettgatan 15–29 B–C	Helsingborg	Logistics/Prod	126		9,562		13,740			23,302
59	Lansen 2	Florettgatan 31–39	Helsingborg	Logistics/Prod	23		1,248		4,425		30	5,703
60	Lansen 3	Florettgatan 29 A	Helsingborg	Office/Retail	8		1,340					1,340
61	Lövsbogen 3	Ekvåndan	Helsingborg	Projects & Land	0							0
62	Manövern 3	Hästhagsvägen 1	Helsingborg	Office/Retail	21		616	3,621	762			4,999
63	Musköten 9	Muskötgatan 4	Helsingborg	Office/Retail	16		975	2,805	1,360			5,140
64	Musköten 13	Muskötgatan 8 B	Helsingborg	Office/Retail	31				6,807			6,807
65	Musköten 17	Kastellgatan 5	Helsingborg	Logistics/Prod	53		676	4,181	3,907			8,764
66	Musköten 19	Bergavägen 6	Helsingborg	Office/Retail	84		4,369		2,380			6,749
67	Musköten 20	Muskötgatan 6–8	Helsingborg	Logistics/Prod	17		404		3,566			3,970
68	Mörsaren Västra 5	Muskötgatan 5	Helsingborg	Logistics/Prod	8				1,701			1,701
69	Mörsaren Västra 13	Florettgatan 4	Helsingborg	Logistics/Prod	17		404		3,566			3,970

Outer Helsingborg												
No.	Name of property	Address	Municipality	Type of property	Tax ass. val. SEK m	Leasehold	Offices, m ²	Retail, m ²	Logistics/Prod, m ²	Education/healthcare, m ²	Other, m ²	Total, m ²
70	Olympiaden 7	Kapplöpningsgatan 5	Helsingborg	Logistics/Prod	8		900		930			1,830
71	Olympiaden 8	Kapplöpningsgatan 3	Helsingborg	Logistics/Prod	20		1,190		5,910			7,100
72	Orkanen 5	Landskronavägen 18	Helsingborg	Logistics/Prod	8		498		2,681			3,179
73	Persien 1	V Sandg. 10–12, Cindersg 11	Helsingborg	Logistics/Prod	7		104		3,113		515	3,732
74	Persien 14	Cindersgatan 13–15	Helsingborg	Logistics/Prod	12		44		2,800	1,022		3,866
75	Persien 15	Cindersgatan 17–19	Helsingborg	Logistics/Prod	0					4,026		4,026
76	Pilbågen 6	Garnisonsgatan 6A–B, 10	Helsingborg	Logistics/Prod	76		4,272	8,069	4,084			16,425
77	Planteringen 1:8	V Tallgatan 32	Helsingborg	Logistics/Prod	6		540		1,312			1,852
78	Planteringen 1:9	V Tallgatan 32	Helsingborg	Logistics/Prod	17		979		5,217			6,196
79	Plåtförädlingen 7	Strandbadsvägen 11	Helsingborg	Logistics/Prod	5				1,230			1,230
80	Plåtförädlingen 8	Strandbadsvägen 13	Helsingborg	Logistics/Prod	47		10,792		1,236			12,028
81	Plåtförädlingen 11	Strandbadsvägen 19–21	Helsingborg	Logistics/Prod	76		3,600	276	17,898			21,774
82	Plåtförädlingen 13	Strandbadsvägen 15–17	Helsingborg	Logistics/Prod	68		1,674		15,193			16,867
83	Plåtförädlingen 15	Strandbadsvägen 7	Helsingborg	Logistics/Prod	21				2,496			2,496
84	Plåtförädlingen 18	Strandbadsvägen 9	Helsingborg	Logistics/Prod	11		70		2,438			2,508
85	Posten 1	Västra Sandgatan 7	Helsingborg	Office/Retail	0		3,051		2,949			6,000
86	Rausgård 21	Landskronavägen 9	Helsingborg	Logistics/Prod	52		2,263		815			3,078
87	Rubinen 1	Basaltgatan 9	Helsingborg	Logistics/Prod	53		1,525		9,117			10,642
88	Sadelplatsen 10	Fäktmästaregatan 5	Helsingborg	Logistics/Prod	13		350		2,725			3,075
● 89	Sadelplatsen 13	Planteringsv 5–9	Helsingborg	Logistics/Prod	83		728	5,680	11,344	1,270	520	19,542
90	Snårskogen 1	Kanongatan 155–159	Helsingborg	Office/Retail	56		2,365	5,600	663			8,628
91	Snårskogen 4	Ekvändan 5	Helsingborg	Logistics/Prod	16				3,015			3,015
92	Snårskogen 5	Ekvändan	Helsingborg	Projects & Land	2							
93	Spanien 5	Gåsebäcksv. 6/Motorg. 1	Helsingborg	Projects & Land	1		0					0
94	Spanien 11	Kvarnstensg 6–8/Motorg 5–7	Helsingborg	Office/Retail	30		2,253	451	2,841			5,545
95	Spjutet 1	Garnisonsgatan 12	Helsingborg	Logistics/Prod	14		168	1,328	1,512			3,008
96	Stormen 13	Landskronavägen 2–12	Helsingborg	Logistics/Prod	18		1,480		2,746			4,226
97	Tyfonen 1	Landskronavägen 20	Helsingborg	Logistics/Prod	19		1,272		2,621		524	4,417
98	Visiret 5	Garnisonsgatan 47 A	Helsingborg	Logistics/Prod	11				3,270			3,270
99	Värjan 12	Muskötgatan 12	Helsingborg	Office/Retail	19		1,871					1,871
100	Värjan 13	Muskötgatan 10	Helsingborg	Logistics/Prod	23				5,350			5,350
101	Zirkonen 2	Andesitgatan 16	Helsingborg	Office/Retail	32			4,628				4,628
102	Ättehögen 6	Torbornavägen 22	Helsingborg	Logistics/Prod	11		385		2,221			2,606
103	Pedalen 16 & others	Rattgatan 48	Landskrona	Projects & Land	0							0
Outer Helsingborg, total					2,221		112,179	59,091	285,249	7,615	1,969	466,103
Helsingborg, total					4,838		226,219	78,299	288,269	41,981	12,034	646,802

West Copenhagen												
No.	Name of property	Address	Municipality	Type of property	Tax ass. val. SEK m	Lease-hold	Offices, m ²	Retail, m ²	Logistics/Prod, m ²	Education/Healthcare, m ²	Other, m ²	Total, m ²
12	Borupvang 2	Borupvang 2/Lautrupcentret	Ballerup	Office/Retail	71		7,785	5,298	1,040		5,600	19,723
13	Borupvang 5	Borupvang 5	Ballerup	Office/Retail	74		10,553				233	10,786
14	Brydehusvej 30	Brydehusvej 30	Ballerup	Office/Retail	28		4,325		333			4,658
15	Industriparken 21	Industriparken 21	Ballerup	Office/Retail	23		4,786		5,264		0	10,050
16	Industriparken 29	Industriparken 29	Ballerup	Office/Retail	27		3,118		0		0	3,118
17	Lautruphøj 8-10	Lautruphøj 8-10	Ballerup	Office/Retail	183		15,603		373			15,976
18	Lautrupvang 1 A+B	Lautrupvang 1 A+B	Ballerup	Office/Retail	220		11,619		2,939		0	14,558
19	Lautrupvang 12	Lautrupvang 12	Ballerup	Office/Retail	90		9,396		0		0	9,396
20	Lautrupvang 2	Lautrupvang 2	Ballerup	Office/Retail	74		11,398		1,220			12,618
21	Lautrupvang 3	Lautrupvang 3	Ballerup	Projects & Land			12,617		0			12,617
22	Lautrupvang 8	Lautrupvang 8	Ballerup	Office/Retail	93		9,074		0		2,672	11,746
West Copenhagen, total					882		100,274	5,298	11,169	0	8,505	125,246
East Copenhagen												
No.	Name of property	Address	Municipality	Type of property	Tax ass. val. SEK m	Lease-hold	Offices, m ²	Retail, m ²	Logistics/Prod, m ²	Education/Healthcare, m ²	Other, m ²	Total, m ²
23	Literbuen 6-10	Literbuen 6-10	Ballerup	Office/Retail	45		2,098		9,625		0	11,723
24	Literbuen 16-18	Literbuen 16	Ballerup	Office/Retail	26		4,708		3,648		0	8,356
25	Meterbuen 27	Meterbuen 27	Ballerup	Office/Retail	71		17,255				0	17,255
26	Mileparken 9 A	Mileparken 9 A	Ballerup	Logistics/Prod	30		2,272		2,704		0	4,976
27	Mileparken 22	Mileparken 22	Ballerup	Office/Retail	40		8,668		2,089		723	11,480
28	Sandtoften 9	Sandtoften 9	Gentofte	Office/Retail	41		4,970				0	4,970
29	Ellekær 2-4	Ellekær 2-4	Herlev	Office/Retail	17				4,828			4,828
30	Ellekær 6	Ellekær 6	Herlev	Office/Retail	32		3,872		859		1,107	5,838
31	Ellekær 9	Ellekær 9	Herlev	Office/Retail	73		5,982		1,167			7,149
32	Hørkær 12	Hørkær 12	Herlev	Office/Retail	31		11,733		464			12,197
33	Hørkær 14 & 26	Hørkær 14 & 26	Herlev	Office/Retail	245		4,191		817		371	5,379
34	Hørkær 16-28	Hørkær 16-28	Herlev	Office/Retail	49		20,817		5,896	6,149	1,662	34,524
35	Knapholm 7	Knapholm 7	Herlev	Office/Retail	55		3,977		528		1,120	5,625
36	Lyskær 9	Lyskær 9	Herlev	Office/Retail	28		4,923		623		0	5,546
37	Marielundvej 28-30	Marielundvej 28-30	Herlev	Office/Retail	45		2,122		7,634		0	9,756
38	Marielundvej 29	Marielundvej 29	Herlev	Logistics/Prod	20		803		3,639		0	4,442
39	Smedeholm 10	Smedeholm 10	Herlev	Office/Retail	26		3,010		196		79	3,285
40	Stationsalleen 40-46	Stationsalleen 40-46	Herlev	Office/Retail	23		1,857	2,773	1,447		0	6,077
41	Vasekær 7	Vasekær 7	Herlev	Projects & Land	7							0
42	Vasekær 10-12	Vasekær 10-12	Herlev	Office/Retail	48		7,660					7,660
43	Digevej 114	Digevej 114	Copenhagen	Office/Retail	263		6,709		680			7,389
44	Hedegaardsvej 88	Hedegaardsvej 88	Copenhagen	Office/Retail	60		23,798				2,570	26,368
45	Lersø Park Alle 103-105	Lersø Park Alle 103-105	Copenhagen	Office/Retail	88		9,859		0		0	9,859
46	Lersø Parkalle 107	Lersø Parkalle 107	Copenhagen	Office/Retail	31		3,310					3,310
47	Amager Strandvej 390	Amager Strandvej 390	Tårnby	Office/Retail			25,431					25,431
East Copenhagen, total					1,393		180,025	2,773	46,844	6,149	7,632	243,423
South Copenhagen												
No.	Name of property	Address	Municipality	Type of property	Tax ass. val. SEK m	Lease-hold	Offices, m ²	Retail, m ²	Logistics/Prod, m ²	Education/Healthcare, m ²	Other, m ²	Total, m ²
48	Abildager 8-14	Abildager 8-14	Brøndby	Logistics/Prod	68		528		13,931			14,459
49	Abildager 16	Abildager 16	Brøndby	Logistics/Prod					7,683			7,683
50	Baldersbuen 5	Baldersbuen 5	Høje-Taastrup	Logistics/Prod	41		1,289		5,639			6,928
51	Banemarksvej 50	Banemarksvej 50	Brøndby	Office/Retail	130		19,636					19,636
52	Ejby Industrivej 41	Ejby Industrivej 41	Glostrup	Projects & Land	15		25,480		23,695			49,175
53	Girostrøget 1	Girostrøget 1	Høje-Taastrup	Office/Retail	46		46,758				15,153	61,911
54	H.J. Holst vej 3-5	H.J. Holst vej 3-5	Brøndby	Office/Retail	30		7,283		722			8,005
55	Helgeshøj Alle 9-15 & 49-55	Helgeshøj Alle 9-15 & 49-55	Høje-Taastrup	Office/Retail	298		13,347					13,347
56	Husby Alle 8	Husby Alle 8	Høje-Taastrup	Office/Retail	111		2,446					2,446
57	Høje-Taastrup Blvd 33-39	Høje-Taastrup Blvd 33-39	Høje-Taastrup	Office/Retail	8		4,280	129	987	1,108	0	6,504
58	Høje-Taastrup Blvd 52-58+	Høje-Taastrup Blvd 52-58+	Høje-Taastrup	Office/Retail	82		2,584	196	0		1,499	4,279
59	Midtager 35	Midtager 35	Brøndby	Logistics/Prod	46				7,960		0	7,960
60	Ny Østergade 7-11	Ny Østergade 7-11	Roskilde	Office/Retail	137		14,609		142	314	684	15,749
61	Oldenburg Alle 1-5	Oldenburg Alle 1-5	Høje-Taastrup	Office/Retail	69		13,023		1,121		542	14,686
62	Park Allé 363	Park Allé 363	Brøndby	Logistics/Prod	28		4,000				0	4,000
South Copenhagen, total					1,108		155,263	325	61,881	1,422	17,879	236,770
Copenhagen, total					4,516		516,981	8,396	124,606	12,508	39,617	702,108